

*The Wolfsin™ name embodies a sense of nature and freedom. Freedom to roam, to climb, to run, to jump, to swim, to work hard and to survive no matter what!©®*



MAN DOWN



LONE WORKER



EMERGENCY CALL  
ALL AS STANDARD

IP67 WATERPROOF  
MIL SPEC 810 G

[www.wolfsin.net](http://www.wolfsin.net)

# User Manual | GRIZZLY™

WHD300

## Preface

We appreciate you purchasing our digital portable GRIZZLY radio (compatible with analog radio). We believe that the quality and high functionality of this radio will meet your requirements and bring to you stable, reliable, clear and highly efficient digital DMR radio communications

As a product compliant with the DMR standard, GRIZZLY supports TDMA (direct mode/repeater mode) and is compatible with high-end analog radio (CTCSS/CDCSS). Its evolved ergonomic design makes it easy to operate, and its digital functions (digital noise reduction, private call, group call and all call, MAN DOWN, LOAN WORKER, EMERGENCY CALL etc.) enable you to be responsive to critical situations.

GRIZZLY has 3 programmable keys/buttons which can be programmed based on your actual needs (such as VOX/ Power Switch/ Man Down/ Zone), which enables various functions to be easy to operate and ensures you a smooth and highly efficient digital DMR radio communicationservice.

## WOLFSIN Service Center

WOLFSIN service network provides more information about on-line service of WOLFSIN two-way radio at [www.wolfsin.net](http://www.wolfsin.net)

More Detailed Product Information

To increase your understanding of the functions of this radio.

More product models

To display more product models, so that you can understand the details of these products in advance and make decisions correctly according to the requirements of your work or industry.

More Professional Technical Support

- User Manual and Brochures

To provide downloading or on-line reading of the latest user manuals and brochures covering detailed information of two-way radios.

- Software Download

To provide dealers a download service of the latest programming software from the WOLFSIN website.

You can connect your two-way radio to a secure computer with a programming cable to manage or edit the parameters of channel frequency and other items. Requires a secure network and dealer training/oversight

- On-line Learning

To offer guidelines for detailed setting of the two-way radio – normally dealers only.

### **More Optional Accessories**

To provide various kinds of accessories that can offer more comfortable operation and an enhanced performance of the radio for you.

For more details, please visit: [www.Wolfsin.net](http://www.Wolfsin.net)

## **Statement**

Wolfsin endeavors to achieve accuracy and completeness of this manual. As for any inaccuracies and omissions that may possibly occur, the right to interpret is reserved to WOLFSIN Ltd

The design and specifications of this product is subject to being modified by WOLFSIN Ltd without prior notice.

**It is prohibited to copy, transmit, excerpt and store this manual in any retrieval system, or translate it to any language without the written authorization of WOLFSIN LTD.**

**Contents**

**Safety Matters** ----- 04

**Product Inspection** ----- 04

**Radio Overview** ----- 05

Radio Controls ----- 05

Programmable Keys ----- 06

**Preparing Your Radio for Use** ----- 06

Charging the Battery ----- 06

Attaching the Accessories ----- 07

**Status Indicators** ----- 09

LED Indicator ----- 09

**Basic Operations** ----- 09

Turning the Radio On/Off ----- 09

Adjusting the Volume ----- 10

Selecting a Zone ----- 10

Selecting a Channel ----- 10

Digital/Analog Switch ----- 10

**Voice Calls** ----- 10

Private Call ----- 10

Group Call ----- 10

All Call ----- 10

Receiving and Responding to a Private Call ----- 11

Receiving and Responding to a Group Call ----- 11

Making a Call on Analog Channels ----- 11

**Functions and Operations** ----- 11

Scan ----- 11

Squelch Off ----- 11

Emergency Alarm ----- 11

**Troubleshooting** ----- 12

**Care and Maintenance** ----- 14

**Service and Support** ----- 14

**Optional Accessories** ----- 15



## Safety Matters

Please read the rules below. Nonobservance of these rules may cause danger or violation of law.

- The use of this radio must comply with regulations of local government.
- Turn off the radio before you enter areas of potentially explosive or flammable environment.
- Do not replace or charge a battery in a potentially explosive or flammable environment/building.
- Turn off the radio before you approach a blast area or detonator area.
- Do not use with a damaged antenna/aerial which may cause a minor burn on skin.
- Only Wolfsin dealers/qualified technicians are allowed to maintain this two-way radio. Do not disassemble the radio by yourself.
- To avoid problems caused by electromagnetic interference or electromagnetic compatibility, please turn off the radio in places with “Wireless Communication Transmit Equipment Prohibited” mark, such as hospitals or other health care places. When taking a plane, turn off the radio if required.
- In a car with an air bag, do not place the radio within possibly involved area when air bag inflates.
- Do not expose the radio to direct sunlight or near heating devices for a long time.
- Keep the radio/aerial vertical and speak near the microphone (2.5-5.0 cms) during transmitting.
- Make sure that the antenna is 2.5 cm away from the body during transmitting if you wear the radio on your body.

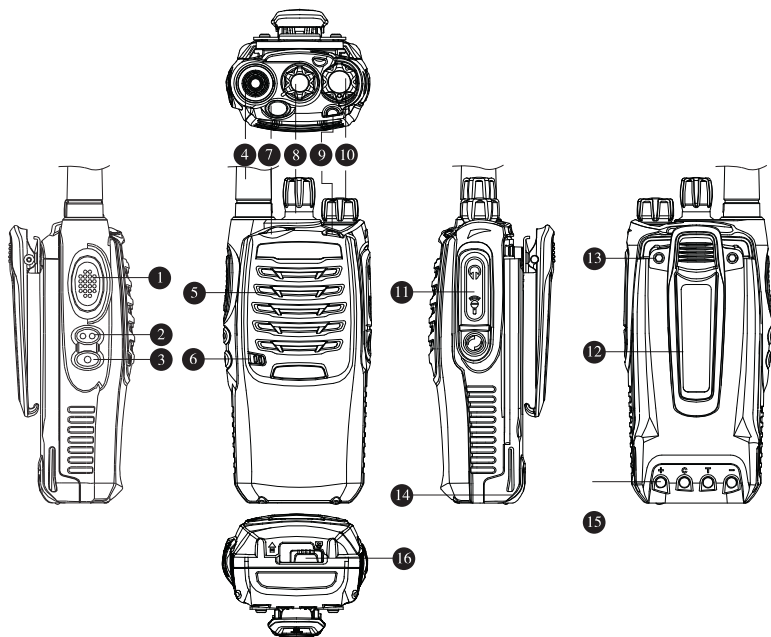
## Product Inspection

Before use, we recommend that you check the packing and identify the items listed below. If any item is missing or damaged during shipment, please contact your dealer.

① Radio GRIZZLY   ② Antenna   ③ Battery   ④ Charger   ⑤ Adapter  
⑥ Hand Strap\*   ⑦ Belt Clip   ⑧ Warranty Card\*   ⑨ User Manual   ⑩ Certificate\*

Note: Frequency range is marked on the color circle at the bottom of the antenna. If not, please refer to that on the radio's label. \* May not be required/supplied in certain regions/countries

## Radio Overview



## Radio Controls

- |                         |                                     |
|-------------------------|-------------------------------------|
| 1.PTT Button            | 9. LED Indicator                    |
| 2.SK1 (Side Key 1)      | 10.Radio On-Off/Volume Control Knob |
| 3.SK2 (Side Key 2)      | 11.Accessory Jack Cover             |
| 4.Antenna               | 12.Belt Clip                        |
| 5.Speaker               | 13.Belt Clip Screws                 |
| 6.Microphone            | 14.Li-Poly Battery                  |
| 7.TK (Top Key)          | 15.Battery Electrodes               |
| 8.Channel Selector Knob | 16.Battery Latch                    |

# Programmable Keys

For enhanced convenience, you may request your dealer to program the 3 programmable keys Sk1, SK2 and TK as shortcuts to the radio functions listed below:

No.	Shortcut Keys	Description
1	Adjust Power Level	To adjust RF power level
2	Emergency On	To initiate an emergency call
3	Emergency Off	To stop transmitting the emergency call
4	VOX	To enable or disable the VOX function
5	Zone Switch	To select a zone quickly
6	Vibrate	To enable or disable the Vibrate function*
7	Man Down	To enable or disable the Man Down function
8	Squelch Off	To always keep the speaker un-muted
9	Battery Power Indication	To indicate the current battery power

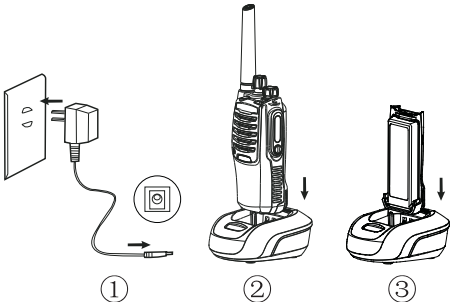
- Notes:
- 1) Long and short press of a key can be assigned with different functions by your dealer.
  - 2) The TK is programmed as the Emergency key by default and can be programmed as a shortcut to other radio functions by your dealer.

# Preparing Your Radio for Use

## Charging the Battery

Please charge the battery with the designated WOLFSIN charger, and the LED indicator on the charger indicates the charging status.

The steps of charging are illustrated as follows:



## Charging Steps

1. **Turn off the radio.** Plug the adapter's connector into an outlet as figure ① shows;
2. Plug the other end of the adapter into the jack on the rear of the charger as figure ② shows;
3. Insert the battery or radio equipped with battery into the charger correctly as figure ③ shows;
4. The LED indicator glows red during charging and turns green when the battery is fully charged.

Note: Please charge the battery for 5 hours for the initial charging to reach its optimum capacity.

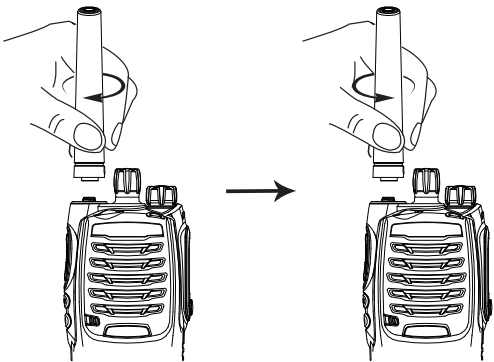
## LED Indicator of Charging

LED Indicator	Charging Status
LED indicator glows red	During charging
LED indicator glows green	Fully charged
LED indicator flashes red	Fault

## Attaching the Accessories

### Attaching the Antenna

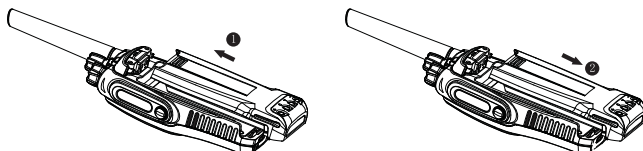
With the radio turned off, set the antenna in its receptacle and turn clockwise to fasten it.



To remove the antenna, turn it counterclockwise. DO NOT OVER TIGHTEN

## Attaching the Battery

1. Insert the battery into the radio as figure ① shows;
2. Press the battery at its bottom slightly until the battery latch locks as figure ② shows.

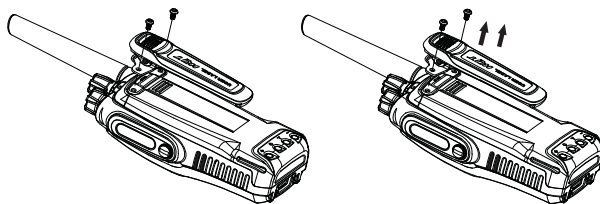


To remove the battery, please make sure the radio is turned off first, and then push the battery latch upwards and slide the battery away from the radio as figure ②.

Note: Your dealer can program a shortcut key to Battery Power Indication for the radio, so you can check current battery power via the shortcut key.

## Attaching the Belt Clip

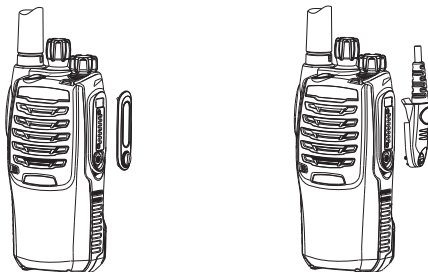
Align the screw holes on the belt clip with those on the radio, and fasten the belt clip with the screws.



To remove the belt clip, screw off the screws.

## Attaching the Audio Accessories/Data Cable

1. Screw off the screw to remove the accessory jack cover (keep it safe);
2. Align the accessory plug with the accessory jack;
3. Tighten the screw on the accessory plug.



To remove the accessory, screw off the screw.

Note: The accessory jack cover is used to avoid dust/liquid entry to the radio, to ensure the normal connection between accessories and radio. It should be kept safe when it is removed from the radio and replaced at all times when the accessory jack is not in use.

## Status Indicators

### LED Indicator

The LED indicator on the top of the radio will help you easily identify current radio status.

LED Indicator	Radio Status
LED flashes green	Powering on
LED glows red	Transmitting
LED glows green	Receiving
LED flashes orange	Scanning

## Basic Operations

### Turning the Radio On/Off

To turn on the radio, please rotate the Radio On-Off/Volume Control knob clockwise until a click is heard.

To turn off the radio, please rotate this knob counterclockwise until a click is heard.

## Adjusting the Volume

After turning on the radio, rotate the Radio On-Off/Volume Control knob clockwise to increase the volume, or turn this knob counterclockwise to decrease the volume.

## Selecting a Zone

A zone is a group of channels exhibiting the same property, which is convenient for you to manage the existing channels. The radio supports up to 64 zones, each with a maximum of 16 channels.

If the dealer has programmed a programmable key as a shortcut to Zone Switch, you can quickly toggle to your desired zone by pressing the programmable key, **an audible indication is given.**

## Selecting a Channel

Rotate the Channel Selector knob to select your desired channel, and you can set TX Admit for every digital channel via the CPS, the TX Admit limits the transmissions on the current channel when there are activities on it.

1. Always Allow: The radio can transmit when PTT button is pressed no matter whether there is activity on the channel or not.
2. Channel Free: The radio can transmit when the channel is free.
3. Color Code Free: The radio can transmit when the channel is free or the color code doesn't match.

Note: TX Admit is used for digital channels only.

## Digital/Analog Switch

Each channel of the radio can be programmed as either analog channel or digital channel by the dealer. If the current zone includes both analog and digital channels, you can quickly switch between digital and analog channels through the Channel Selector knob.

## Voice Calls

To ensure the optimum volume for the receiver, **please keep the microphone 2.5 to 5 cm away from your mouth when transmitting.**

## Private Call

In standby mode, the radio will transmit a Private Call to the preset Private Call contact on the current channel when PTT button is pressed.

Your dealer may preset a TX Contact for each digital channel. The preset TX Contact can be a Private Call number, a Group Call number or an All call number.

## Group Call

In standby mode, the radio will transmit a Group Call to the preset Group Call contact on the current channel when PTT button is pressed.

## All Call

The way to make an All Call is the same with that of making a Group Call. Only when your dealer enables the All Call function for you can you make an All Call.

## Receiving and Responding to a Private Call

You can listen to the Private Call without any operation when you receive one, and press PTT button within the preset time to respond to the Private Call.

## Receiving and Responding to a Group Call

You can listen to the Group Call without any operation when you receive one, and press PTT button within the preset time to respond to the Group Call.

**Note:** You cannot respond to an All Call.

## Making a Call on Analog Channels

To make a call on analog channels, hold down PTT button and speak into the microphone. Release the PTT button to receive calls.

# Functions and Operations

## Scan

### ▪ Scan On/Off

The function "Scan" allows you to listen to communication activities on other channels so that you can keep a close track of your team members. This option is used to enable or disable the function.

### ▪ Scan List

You can request your dealer to create a Scan List for each channel. Each Scan List contains up to 16 channels which can be a digital channel or analog channel.

Note: The function "Scan" can be enabled only when there is a preset Scan List on the channel.

## Squelch Off

If the feature "Squelch Off" is enabled, your radio's speaker will keep un-muted no matter whether there is carrier or not.

## Emergency Alarm

### 1. Digital Emergency Alarm

You can ask your partner or the control center for help through this function when an emergency occurs. Emergency Alarm has the highest priority so that it can be enabled no matter whether the radio is transmitting or receiving.

If you want to enable the Emergency Alarm on a channel, you must associate an emergency system for the channel via the CPS. Emergency Type and Emergency Mode can also be set in the CPS.

#### Emergency Type

The radio supports 5 emergency types as below, and you can request your dealer to enable any one of them for you.



Emergency Type	Description
Siren Only	The radio emits a siren, and the control center will not receive the emergency signal.
Regular	The radio displays audio and visual indicators during Emergency mode.
Silent	The radio does not display any audio or visual indicators during Emergency mode.
Silent w/ Voice	Except the voice from the received calls, the radio does not display any other audio or visual indicators during Emergency mode.
Emergency Alarm	The radio emits a siren after sending an emergency signal to the control center. And it displays audio and visual indicators during Emergency mode.

### Emergency Mode

The radio supports 3 emergency modes as below, and you can request your dealer to enable any one from them for you.

Emergency Mode	Description
Alarm	The radio only transmits the emergency alarm code when Emergency is initiated.
Alarm w/ Call	The radio transmits both the emergency alarm code and emergency call when Emergency is initiated.
Call Only	The radio immediately transmits an emergency call when Emergency is initiated.

## 2. Man Down

This function can be enabled via the CPS and can also be enabled or disabled by pressing the preset shortcut key. It enables the radio to initiate an emergency alarm automatically when the radio tilts to a certain angle for a certain period of time.

## 3. Lone Worker

With this feature, the radio can be programmed whether to automatically enter Emergency mode or not via the CPS if there is no operation for a predefined time. This function is helpful especially for people who work alone. Because the radio will automatically send the emergency signal to your partners or the control center for help if you can not operate the radio within the predefined time during working alone when emergency occurs.

# Troubleshooting

Problem	Analysis	Solution
The radio cannot be powered on.	The battery may be improperly installed.	Remove the battery and attach it again.
	The battery power may run out.	Recharge or replace the battery.
	The battery may have a poor contact caused by dirtied or damaged battery contacts.	Clean the battery contacts . If the problem can not be solved, contact your dealer or WOLFSIN-authorized service center for inspection and repair.
The voice is weak, intermittent or cannot be heard during receiving signals.	The battery voltage may be too low.	Recharge or replace the battery.
	The volume may be set to a low level.	Increase the volume.
	The antenna may be loose or may be improperly installed.	Power off the radio and reinstall the antenna.
	The speaker may be blocked or damaged.	Clean the surface of the speaker. If the problem cannot be solved, contact your dealer or WOLFSIN-authorized service center for inspection and repair.
You can not communicate with other group members.	The frequency or signaling may be different from that of other radios in the group.	Set the TX/RX frequency and signaling to the same as those of other radios in the group. CONTACT YOUR WOLFSIN DEALER
	The channel type (digital/analog) may be set inconsistently.	Make sure all group members are on the same digital/analog channel.
	You may be too far away from the group members.	Move towards other group members.
Irrelevant communications or noises are heard on the channel.	Your radio may be interfered with by radios using the same frequency.	Change the frequency or adjust the squelch level.
	The radio may not be set with any signaling.	Set signaling for all member radios to avoid interference at the same frequency.
Too much noise	The communication distance from other group members may be too long.	Move towards other group members.
	The location may be bad for communications, such as a place which is blocked by tall buildings or a basement.	Move to an open and flat ground, turn on the radio and try again.
	The radio may be interfered by the environment or electromagnetism.	Keep the radio away from any equipment that may cause interferences.

Note: If the solutions above cannot solve your problems or you have some other problems, please contact your dealer or WOLFSIN to get more technical support.

## Care and Maintenance

To ensure the radio its best performance and prolong its service life, please ensure a better daily care and maintenance to it by following the tips listed below:

- Do not puncture or scratch the radio with sharp objects;
- Do not store the radio in places where there are substances that corrode electronics and electric circuit;
- Do not carry or hold the radio by the antenna or earphone wire;
- Please replace the accessory jack cover when the accessory jack is not in use;
- Please regularly wipe the dust or stains on the radio and charging pole pieces with clean and dry lint-free cloth or brush;
- Please use neutral detergent and non-woven fabrics to clean the radio when its keypad, knobs or case gets dirty. Do not use chemical agent such as decontaminant, alcohol, spraying agent or petroleum preparation in case the surface and case of the radio gets damaged. And do not use the radio unless it is thoroughly dry after cleaning.

Note: Please turn off the radio and remove the battery before cleaning.

## Service and Support

WOLFSIN Ltd. ("WOLFSIN") provides long-term support for its products, including the repair within the warranty period, paid repair beyond the warranty period and supply of parts and accessories.

### Service Commitment

1. WOLFSIN two-way radio body has a 12-month warranty; accessories (battery, adapter, charger and antenna) 6-12 months; earphone 3 months.
2. Free repair is available and subject to the fully-filled warranty card\* and valid original invoice of purchase in the case that the radio or accessories cannot work normally due to non-human factor during the warranty period.
3. Replacement or repair is available and subject to the fully-filled warranty card and valid original invoice of purchase in the case that the radio or accessories can not work normally because of non-human factor within 30 days from the date of purchase.
4. Repaired parts are warranted for the balance of the original applicable warranty period or 90 days from the date of repair. The longer one is valid.

### Warranty

1. The warranty is only valid for products under normal use, defects or damages that result from human factors are excluded from the warranty coverage. Such as: disassembling or modifications, damage caused by external force, water penetration, burns, use of WOLFSIN unapproved accessories, using against the user manual and so on.
2. The warranty period starts from the date of purchase on the invoice.
3. Free repair is unavailable if the WOLFSIN mark or serial number label is torn off or missing.
4. Only the fully-filled warranty card\* and valid original invoice of purchase with WOLFSIN's seal or authorized dealer's seal affixed are valid for receiving the warranty service.

### Cautions

1. **Read the user manual before use. V001.1.20210909**

2. Do not use the radio with damaged antenna, only WOLFSIN approved antenna is applicable.
3. Turn off the radio in potentially explosive or flammable environments.
4. Avoid the contact between the battery and metal, oily or corrosive objects.
5. Do not immerse the radio or battery into liquids or discard them in fire.
6. Use the radio only with standard battery, adapter, charger and earphone.

## Terms of Warranty

1. WOLFSIN two-way radio body has a 12-month warranty; accessories (battery, adapter, charger and antenna) 6-12 months; earphone 3 months, local Wolfsin dealer will confirm warranty.
2. Only the fully-filled warranty card and valid original invoice of purchase with WOLFSIN's seal or authorized dealer's seal affixed are valid as proofs for identifying the warranty period. (The invoice should give clear indication of radio, accessories, serial number, date of purchase, purchase price and so on.)
3. If the radio body goes wrong during the warranty period, it should be ensured working normally over 30 days after the repair.
4. Replacement or repair is available and subject to the fully-filled warranty card and valid original invoice of purchase in the case that the radio cannot work normally as the instructions list within 30 days from the date of purchase. (Note that there must not be abrasions on radio body and accessories.)
5. Replacement of the same model is available and subject to the 3 repair receipts in the case that the radio body still works abnormally after 3-time-or-above repairs during the warranty period.
6. Repair of the radio and accessories (battery, adapter, charger and antenna) is available and subject to the valid original invoice of purchase.
7. The costs of materials and repair are covered during the warranty period.
8. No warranty service is provided if the WOLFSIN mark and/or serial number label on the product are/is removed/torn off.
9. Exclusions from warranty coverage:
  - 1 ) Beyond the valid warranty period;
  - 2 ) Defects or damages that result from use of the product in other than its normal and customary manner; 3 ) Defects or damage resulting from misuse, accident, water penetration or neglect;
  - 4 ) Defects or damage caused by improper testing, operation, repair, installation, reconfiguration or Adjustment;
  - 5 ) Defects or damage to antenna unless caused by material or processing problems; 6 ) Product which has the serial number removed or illegible;
  - 7 ) Product with unclear date of purchase;
  - 8 ) Defects or damage because of unauthorized repair or disassembling;
  - 9 ) Rechargeable battery if:
    - ( 1 ) there is any damage or any sign of unsealing to it;
    - ( 2 ) the defect or damage is caused by charging the battery with improper equipment or using it beyond specified maintenance condition; 10 )

Abrasions/dents under normal use.

Note: This warranty will be adjusted or modified properly according to the market, and it is subject to change without notice. If adjusted or modified, the warranty is subject to the latest version issued by a WOLFSIN service center in WOLFSIN Ltd official channels.

## Optional Accessories

The main optional accessories of the radio are listed below, for more information please contact your dealer or WOLFSIN service center at [www.wolfsin.net](http://www.wolfsin.net)

Antenna (GAUS1), Antenna (GAVS1), D-Earphone: GDREP01, Earphone (Air Tube): GFB101. Cloning Cable Programming Cable GCPG1. Remote Microphone: GRSM300P, GRSM300W. Note: Please use WOLFSIN approved accessories, or users must bear all the consequences caused by using unauthorized accessories.

## **IMMERSION/SUBMERSION GUIDANCE AND INSTRUCTIONS.**

The IP-67 waterproof standard specifies that a device/radio will be protected against the effects of immersion to/in a depth of 0.15 to 1.00 metre of still water for 30 minutes. The GRIZZLY has been officially tested to 1.00 metre depth for 30 minutes or more.©

However in the event of any submersion in any fluid, the following process should be immediately carried out, particularly if the fluid was not still fresh water©.

1. Recover the radio as quickly and as safely as you can. **DO NOT TAKE RISKS!!**©
  2. **REMOVE THE BATTERY FIRST – DO NOT SWITCH OFF THE RADIO USING THE ON/OFF SWITCH**©
  3. **Only now switch off the radio.** ©
  4. Turn the radio horizontal, with the speaker grill down towards the ground. ©
  5. Take off the audio accessory cover so that water can discharge from a two pin accessory socket or run off the multi-pin sealing plate.©
  6. Keep the radio facing down (as 4 above) and place on a thin absorbent soft towel, then place the towel on a warm (not hot) radiator, leave like this for 24-48 hours or more. Immediately inform your Wolfsin dealer that this process is taking place, quote the serial number of the radio. ©
  7. Every 3-4 hours shake the radio to encourage liquid to escape from the body. ©
  8. Immediately dry off the battery that has been submerged, ensuring that no metal terminals are wet, do not use the battery for 24-48 hours, after 48 hours put the battery in the charger to check for any fault caused by the submersion in water/fluid, the charger will indicate a fault by flashing red, if flashing red do not use this battery, dispose of this battery correctly. ©
  9. **IMPORTANT** – You must inform your Wolfsin dealer/service centre immediately by email when the radio is submersed, if submersed in more than 1 metre of water/fluid you must **NOT** reattach any battery nor put power through the radio, **the radio must be returned to your Wolfsin service centre for inspection and testing.** If dropped into UNDER 1 metre of water/liquid\* for less than 30 minutes then you can reattach the battery, radio having being switched off for 48 hours, and switch on the power. If the radio powers up and operates then continue to monitor the radio for at least another 2-4 weeks. Inform your Wolfsin dealer or service centre by email of this. ©
  10. Monitor the radios performance for at least 2-4 weeks, particularly if any lone worker, man down functions are in operation which may be affected by water ingress. If in doubt return the radio to your Wolfsin dealer/service centre for service/inspection. ©
- \* If dropped in any contaminated fluid then you must decontaminate the radio, then return the radio to a Wolfsin dealer/service centre highlighting by email the full extent and nature of the contaminated fluid in which the radio was immersed/submersed.**